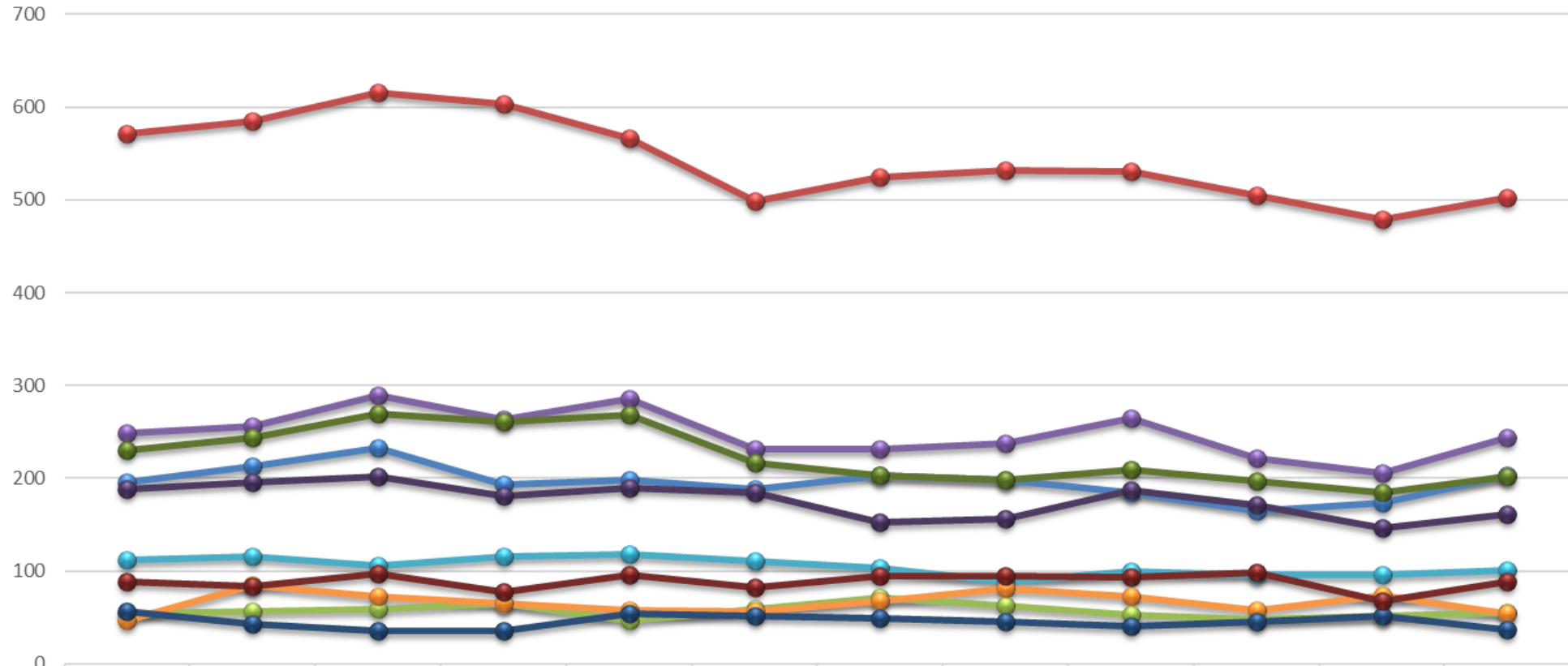
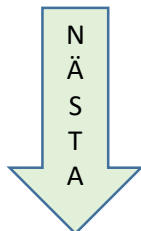


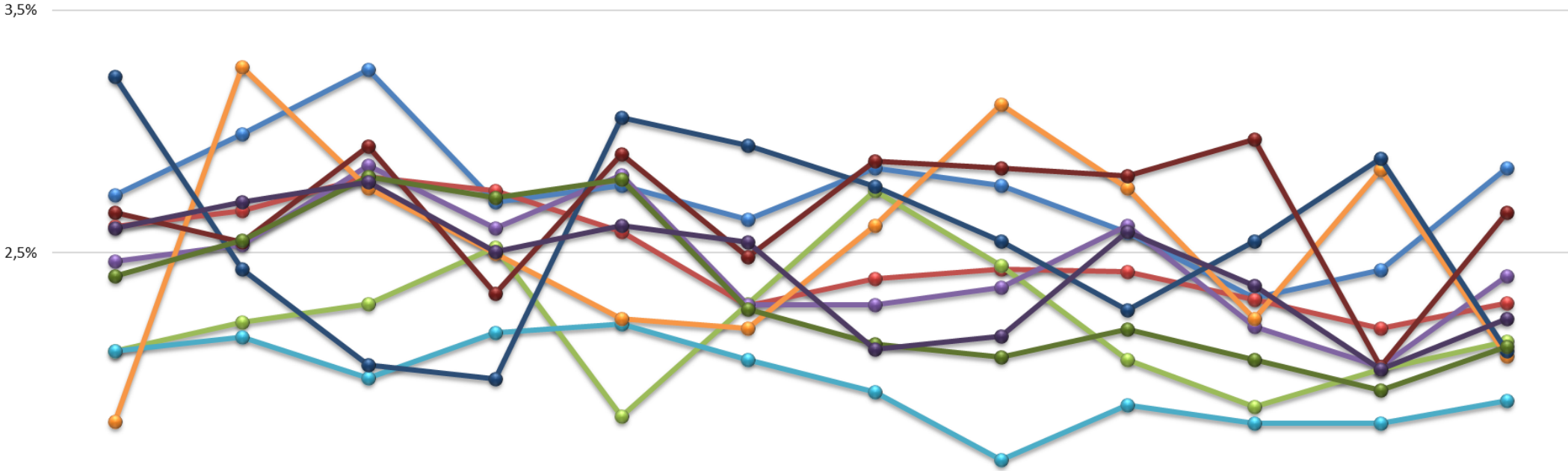
Antal inskrivna = vårdkontakter 65+ per kommun



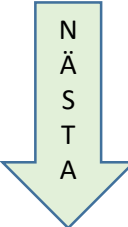
	2023-09	2023-10	2023-11	2023-12	2024-01	2024-02	2024-03	2024-04	2024-05	2024-06	2024-07	2024-08
Bollnäs	195	213	232	193	198	188	203	198	184	165	173	203
Gävle	571	585	616	603	566	499	524	532	530	505	479	502
Hofors	54	57	59	65	47	59	71	63	53	48	52	55
Hudiksvall	249	256	289	263	285	231	231	238	264	222	205	243
Ljusdal	112	115	106	116	118	110	103	88	100	96	96	101
Nordanstig	47	85	72	65	58	57	68	81	72	58	74	54
Ockelbo	57	43	36	35	54	52	49	45	40	45	51	37
Ovanåker	88	84	97	77	96	82	95	94	93	98	67	88
Sandviken	230	244	269	261	268	217	203	198	209	197	185	202
Söderhamn	188	196	202	181	189	184	152	156	187	171	146	161



Andel inskrivna = vårdkontakter 65+ per kommun



	2023-09	2023-10	2023-11	2023-12	2024-01	2024-02	2024-03	2024-04	2024-05	2024-06	2024-07	2024-08
● Bollnäs	3%	3%	3%	3%	3%	3%	3%	3%	3%	2%	2%	3%
● Gävle	3%	3%	3%	3%	3%	2%	2%	2%	2%	2%	2%	2%
● Hofors	2%	2%	2%	3%	2%	2%	3%	2%	2%	2%	2%	2%
● Hudiksvall	2%	3%	3%	3%	3%	2%	2%	2%	3%	2%	2%	2%
● Ljusdal	2%	2%	2%	2%	2%	2%	2%	2%	2%	2%	2%	2%
● Nordanstig	2%	3%	3%	2%	2%	2%	3%	3%	3%	2%	3%	2%
● Ockelbo	3%	2%	2%	2%	3%	3%	3%	3%	2%	3%	3%	2%
● Ovanåker	3%	3%	3%	2%	3%	2%	3%	3%	3%	3%	2%	3%
● Sandviken	2%	3%	3%	3%	3%	2%	2%	2%	2%	2%	2%	2%
● Söderhamn	3%	3%	3%	3%	3%	3%	2%	2%	3%	2%	2%	2%



Andelen inskrivna som är över 65 år per kommun tom aug per år

